



INTERIOR DESIGN PORTFOLIO

ALYSSA WHITE



Hi there!

My name is Alyssa. I'm a New York City native passionate about interior design. I will graduate from the Fashion Institute of Technology with a Bachelor's of Fine Arts Degree in interior design in May 2024. I especially engage in storytelling through design and creating inspiring concept driven designs. With two years of internship experience, I am eager to explore more of the professional design world.

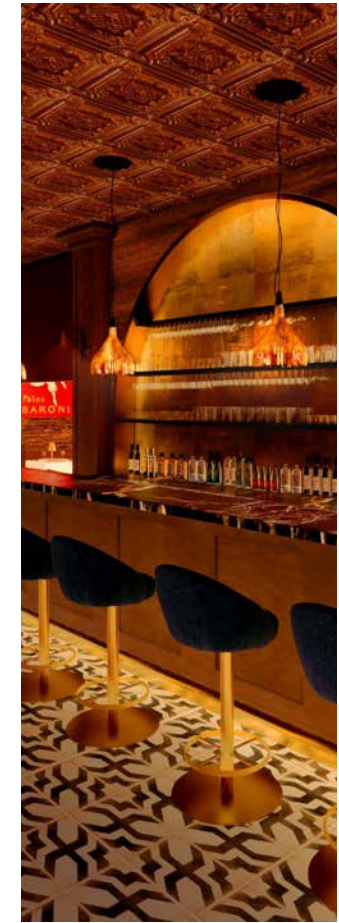
alyssa_white@fitnyc.edu
917 - 745 - 7258

All projects shown were drafted and 3D modeled in Rhino 7 and rendered using Enscape.



Sofitel Hotel on Fifth

5



The Wine Cellar Italian Restaurant

13



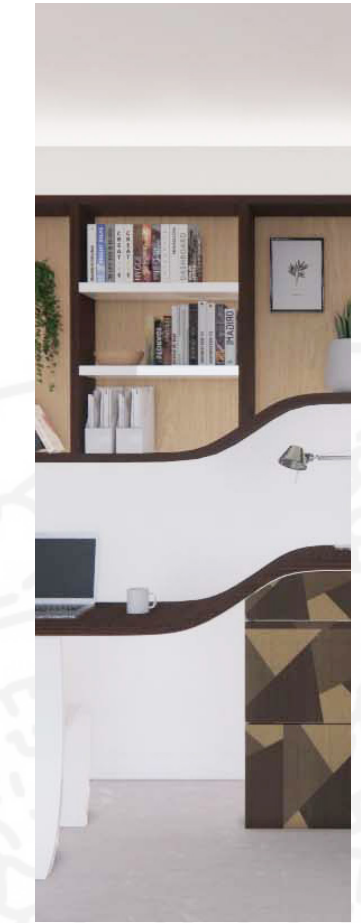
NYC Consular Residence of Pakistan

25



Ore Coworking Space

35

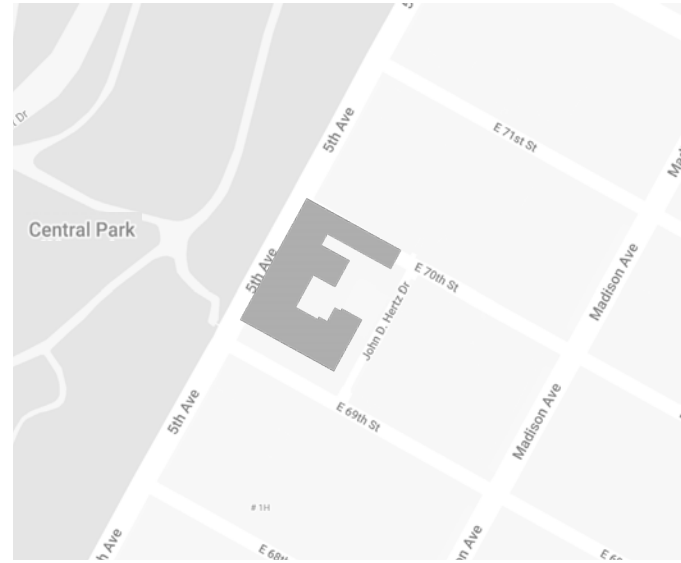


"Rompicapo" Furniture Collection

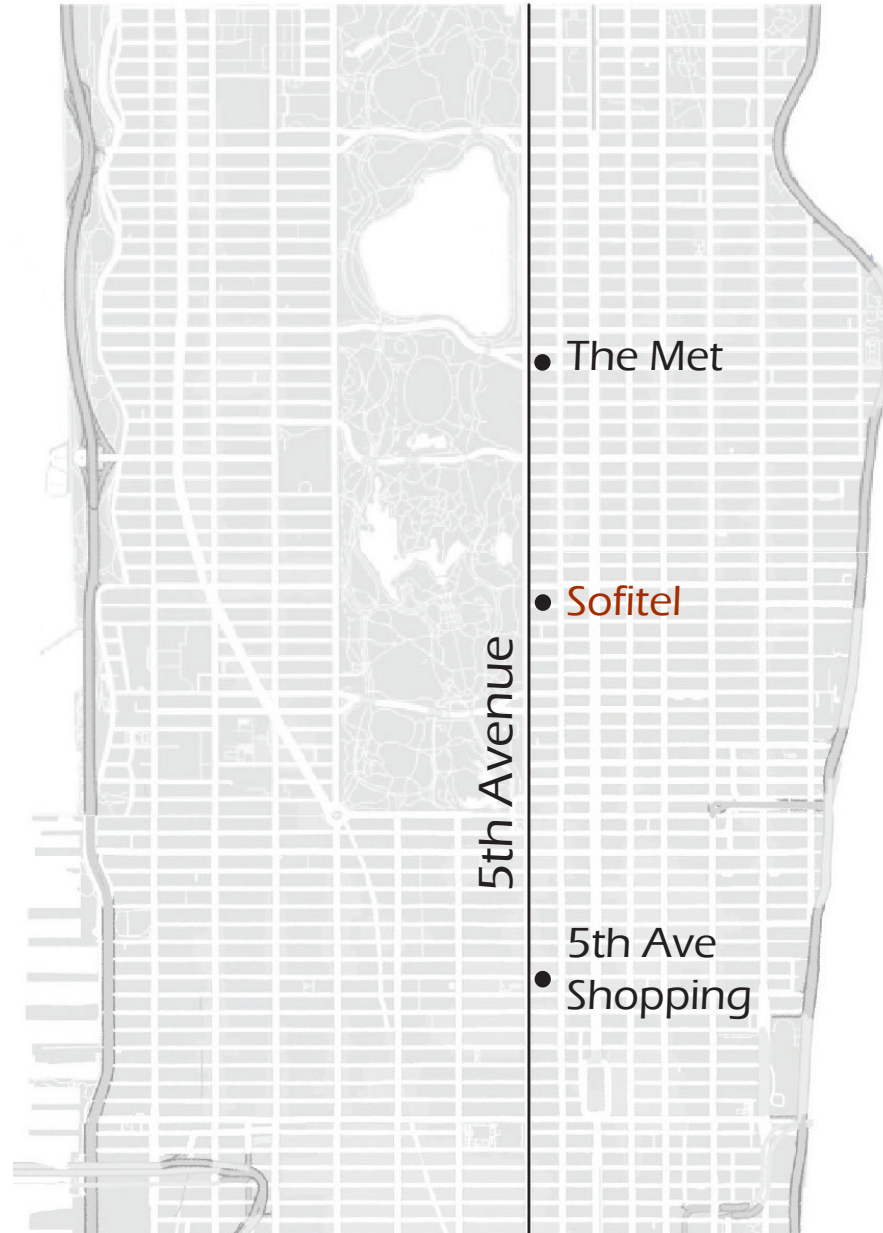
45



Sofitel on Fifth - Luxury NYC Hotel
Fall 2023



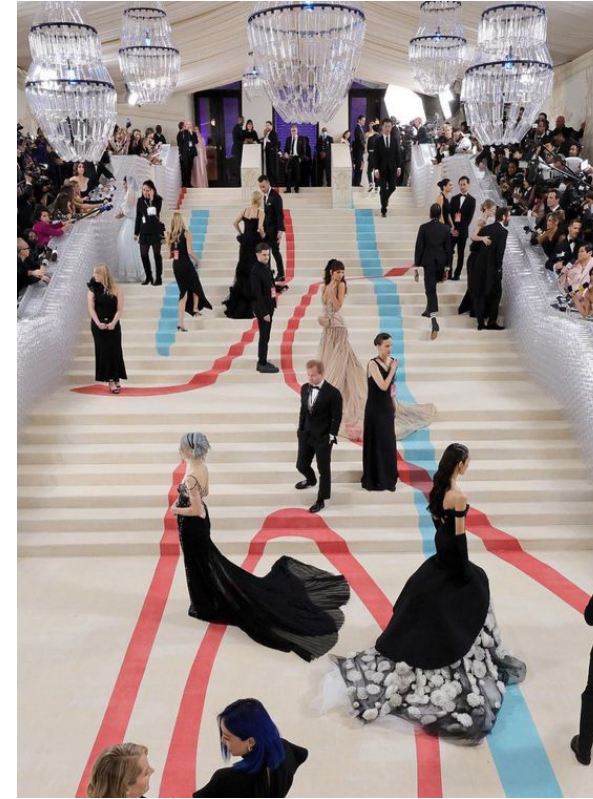
880 5th Ave
New York, NY 10021



PROJECT LOCATION

The **Met Gala** is New York City's most luxurious event. Each year The Metropolitan Museum of Art hosts hundreds of fashion icons and celebrities as they debut striking looks during this significant night for the fashion industry.

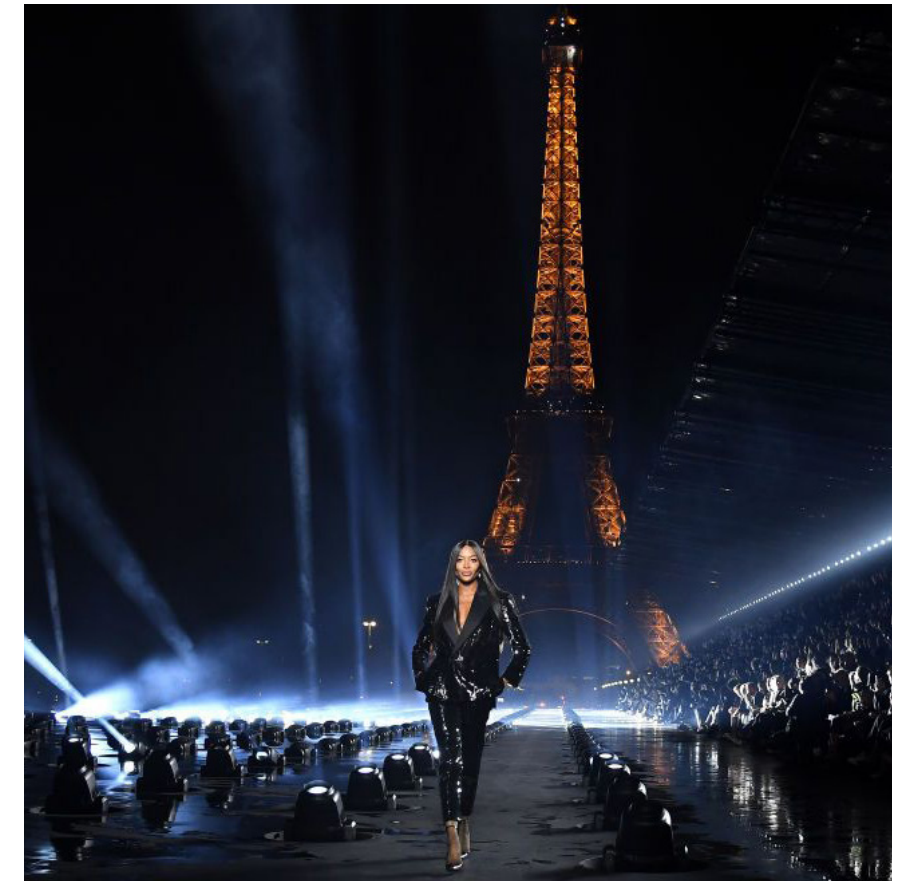
With its proximity to the Met, **Sofitel is the optimal stay for celebrities attending the Met Gala** along with their teams. Sofitel is a suitable stay for any fashion lover as its interior is **fashion inspired** with its custom furnishings and materials. At this suitable location, guests must only travel down 5th Ave to shop the famous high-end stores.

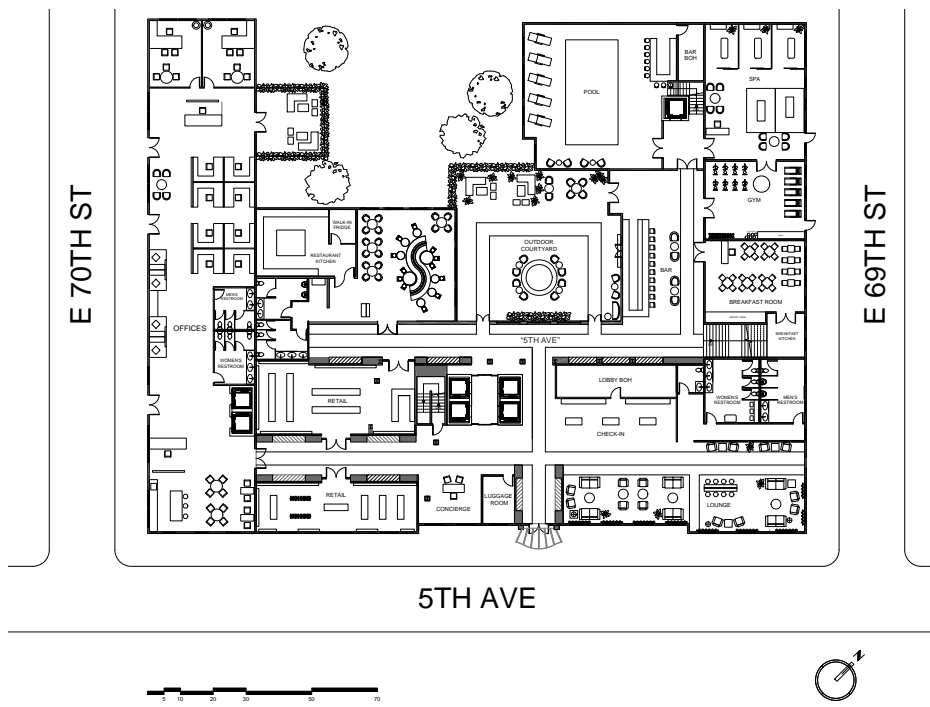


THE RUNWAY

What makes Sofitel on Fifth unique are the runway shows that will take place in the lobby. Guests will circulate through the lobby corridors by day, and models will unveil extravagant looks down the corridor by night.

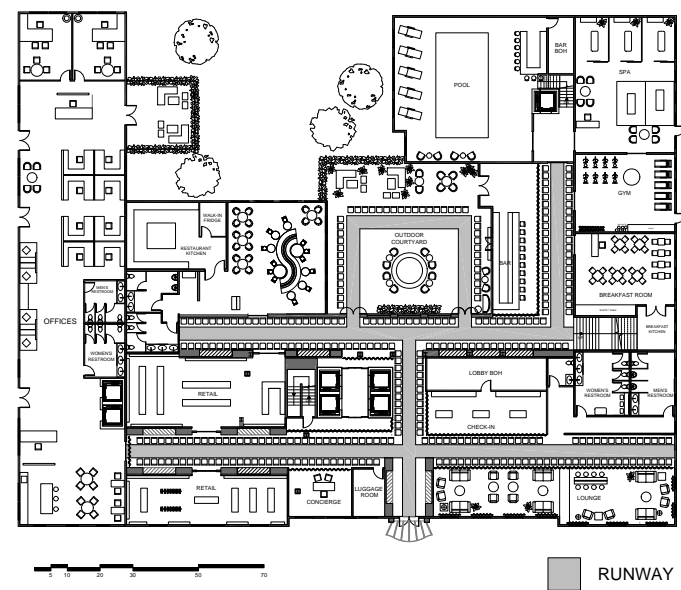
Therefore other guests to consider are the models, their accompanying teams, and fashion show attendees. Sofitel on Fifth will be a must stay for those discovering the fashion world of NYC.





LEVEL 1 FLOOR PLAN WITH SITE

In an effort to merge New York City with French elegance, the lobby plan is laid out with orthogonal circulation routes to mimic NYC's famous grid-like streets. This formation led to the creation of the lobby's own "5th Ave" running through the center. This central circulation path truly imitates NYC's real 5th Ave as on one side is the courtyard (shown right) which simulates Central Park, and on the other side are the eight storefronts we designed to imitate the real high-end stores along NYC's 5th Ave (shown below). This circulation comes to an end at the staircase that resembles The Met steps that celebrities walk up at the Met Gala.

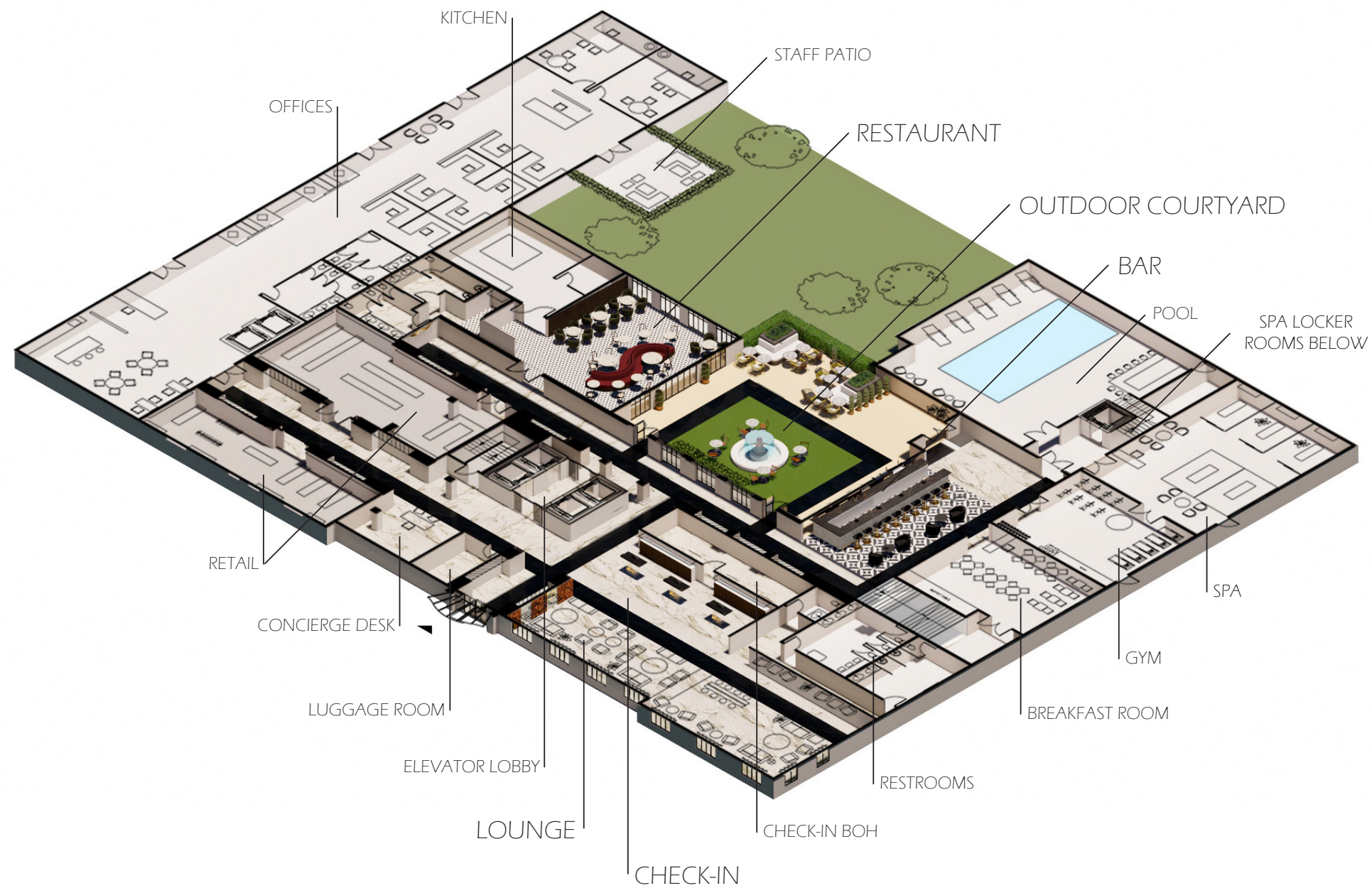


LEVEL 1 FASHION SHOW FLOOR PLAN

The fashion show floor plan shows how the lobby will be transformed when it is show time. Chairs will be placed alongside the runway and curtains will be put up to close off certain areas. There are 350 seats total, with 296 seats indoors and 53 seats outdoors. Models will begin the show by walking down the center staircase and then make their way throughout the lobby, including out through the courtyard.

The level 2 floor plan shown in the research booklet holds a workroom where the models and the teams prepare for the show.

AXONOMETRIC PLAN





VISION BOARD
& MATERIAL SELECTION



Staff assisting guests at individual check-in desks



Yves Saint Laurent
Libre Eau de Parfum



Yves Saint Laurent
Libre inspired check-in desk



ARRIVAL

LOUNGE



Cartier Tank
Watch



Cartier inspired
wall clock



Chanel Classic
Double Flap 26



Chanel quilted stitching
inspired sofa



Views of 5th Ave and Central Park

FASHION RUNWAY BY NIGHT

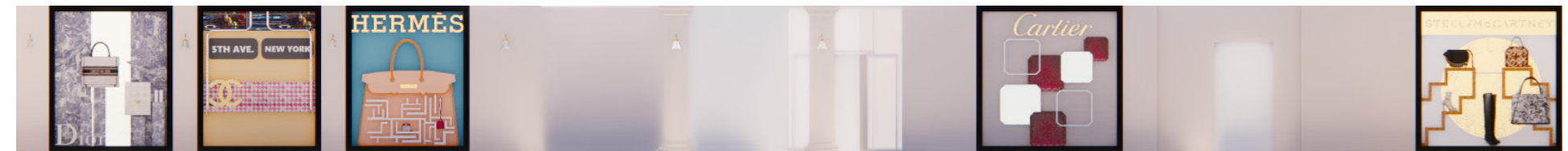
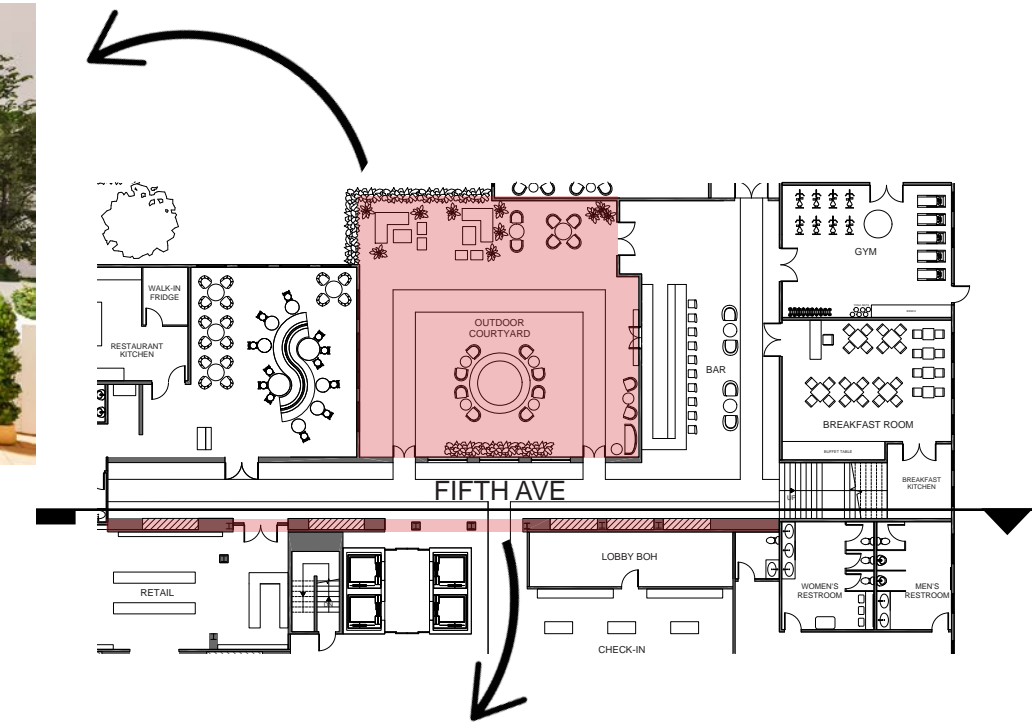


HOTEL CORRIDOR BY DAY

IMITATING NYC'S FIFTH AVE



COURTYARD - RESEMBLING CENTRAL PARK



ELEVATION OF STOREFRONTS - RESEMBLING THE LUXURY STOREFRONTS ALONG 5TH AVE

Shown above are eight storefronts along the runway's "5th Ave" that were designed to imitate the real storefronts of the many famous high-end stores on NYC's 5th Ave. Showcased here are luxury French brands such as Hermes, Dior, Chanel, and Cartier. To highlight the importance of sustain-

ability, Stella McCartney's storefront is included. Not only is Stella McCartney considered high-end, she is also a designer that is pushing the sustainable movement in the fashion world.



Champagne bar



Dior Grained Calfskin Mini Saddle Bag, Black



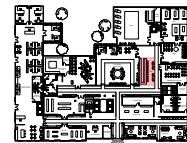
Dior saddle bag inspired barstool



Dior J'adore Eau de Parfum



Dior J'adore perfume bottle inspired light pendant



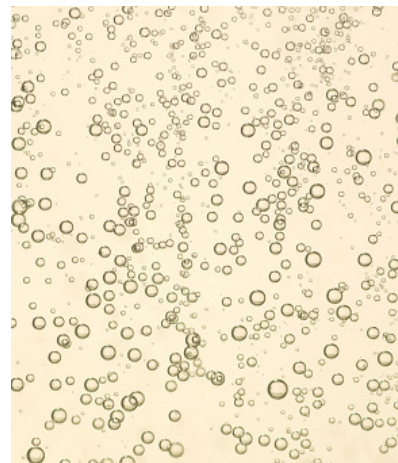
LE FIZZ- CHAMPAGNE BAR

THE CONCEPT - CHAMPAGNE



INSPIRATION

Champagne glass pyramid



INSPIRATION

Champagne bubbles



RESULT

Coupe glasses arranged in triangular form to resemble the pyramid



MATERIAL SELECTION

Pulp Studio Antique Mirror Modern Reflections Collection

MADAME MANGE



Classic French bistro



Viktorija Pashuta - Vogue Fashion, 2018



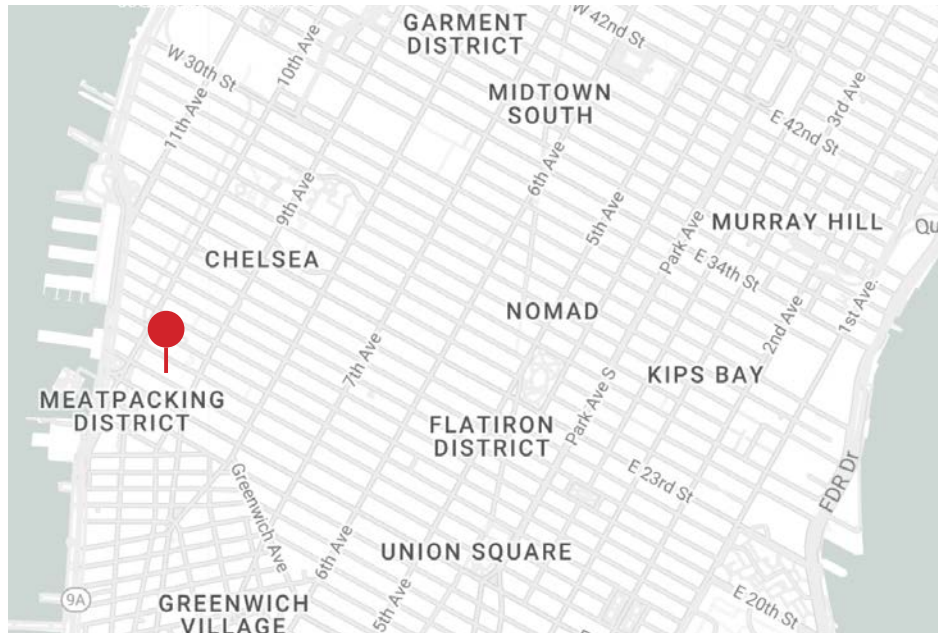
Frank Horvat - Givenchy Hat, 1958



Helmut Newton - Le Smoking, YSL, 1975



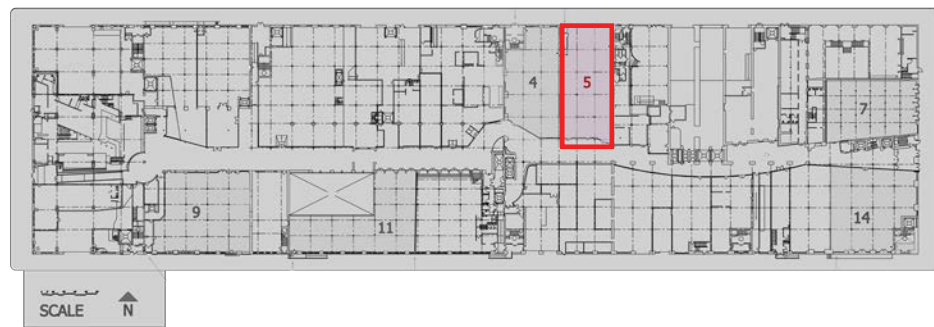
The Wine Cellar - NYC Restaurant
Spring 2022



Location: Chelsea Market
75 9th Ave, New York, NY 10011



Chelsea Market interior



Chelsea Market, Lot 5



The Wine Cellar

ITALIAN WINE BAR AND RESTAURANT

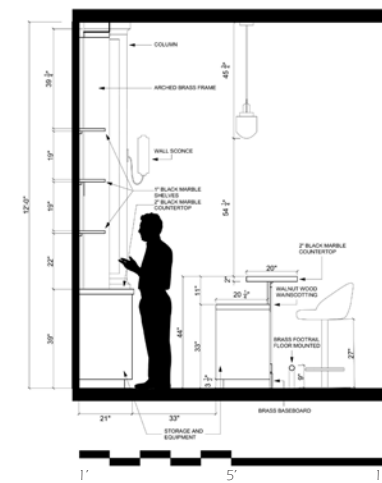
The Wine Cellar is a fine dining Italian restaurant conceptually based on the drink Italy is known for: wine. Guests are given a true wine tasting experience- first, guests sit at the bar or in the comfortable lounge seating and taste various wines. Once the guests find their perfect wine, they are sat in the dining area where they can drink it with a flavorful Italian dish. Centered in the dining area is a walk-in glass wine closet showcasing the wide variety of wines that The Wine Cellar has to offer.



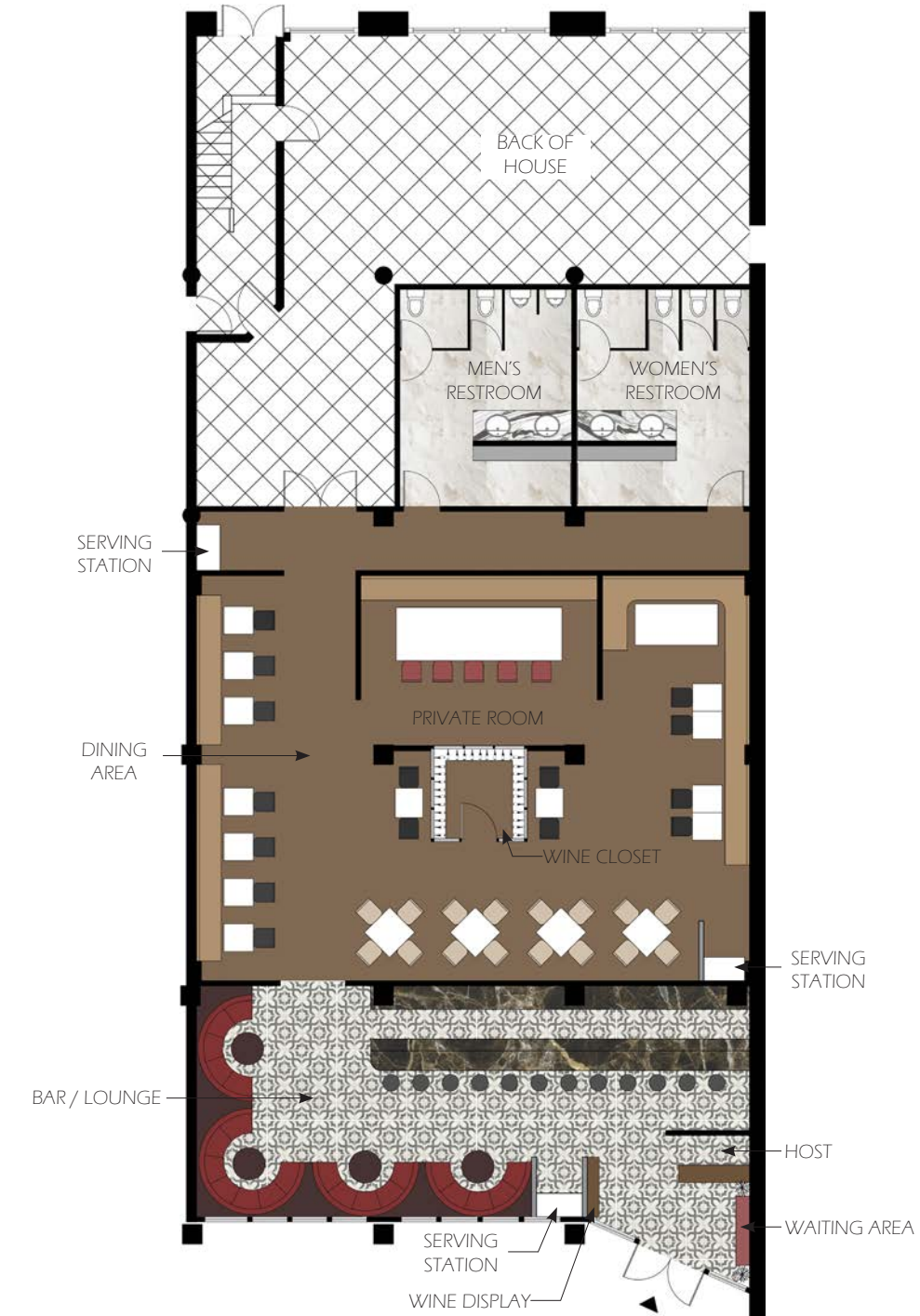
THE WINE CELLAR'S
SPECIALTY RED
BRANDING PACKAGE

The Wine Cellar ITALIAN WINE TASTING AND DINING		
WINE LIST		
WHITE	RED	
ELENA WALCHI	GIROLAMO RUSSO	19
PAVESE	CELESTI	12
OLTRETOBBENTE	GROSJEAN	6
PIA	VECCHIE TERRE DI MONTEPULCIANO	20
TIBERIO	ARNALDO CAPRALI	19
CONTRADA SALANDRA	IGNI	21
RONCHI DI CIALLA	G. D. VAIRA	27
ALFEO CONSENTINO	BUSIOLA	20

WINE LIST



BAR SECTION



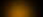



LIGHTING SECTION



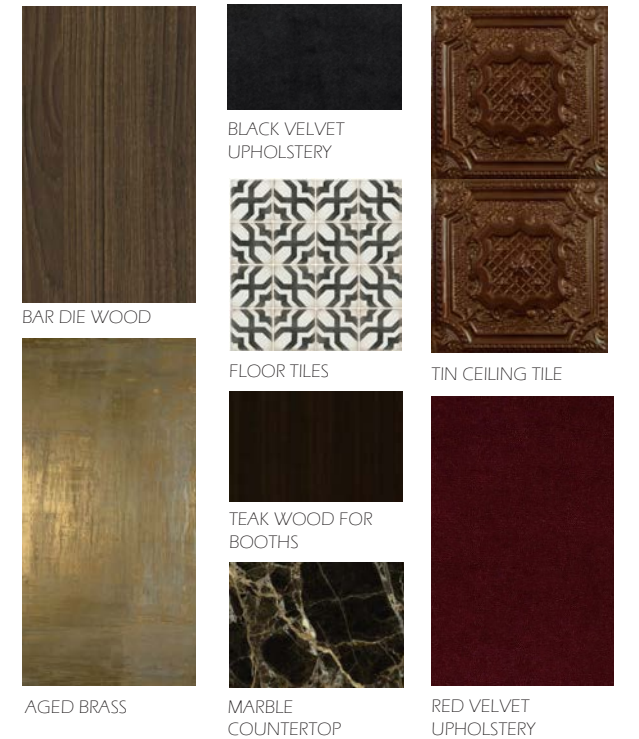
LIGHTING PLAN

LIGHTING LEGEND:

-  L1 6IN DOWNLIGHT
-  L2 PENDANT LIGHT
-  L3 TABLE LAMP
-  L4 CHANDELIER
-  L5 WALL SCONCE
-  L6 LINEAR LIGHTING
-  L7 PICTURE LIGHT



BAR



KARTELL
E' SUSPENSION LAMP
COLOR: TRANSPARENT
YELLOW



BARSTOOL



BAR LIGHTING
DIOELED
BLAZE TAPE LIGHT
24VDC
2700K



DINING ROOM



TIN CEILING TILE



CORK WALLCOVERING



RED FABRIC UPHOLSTERY



CORK WALLCOVERING



WOODEN FLOORING



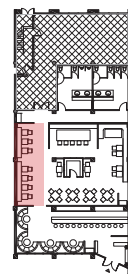
LEATHER BOOTH UPHOLSTERY



DINING CHAIR 1



DINING CHAIR 2



KARTELL BATTERY TABLE LAMP
FINISH: AMBER



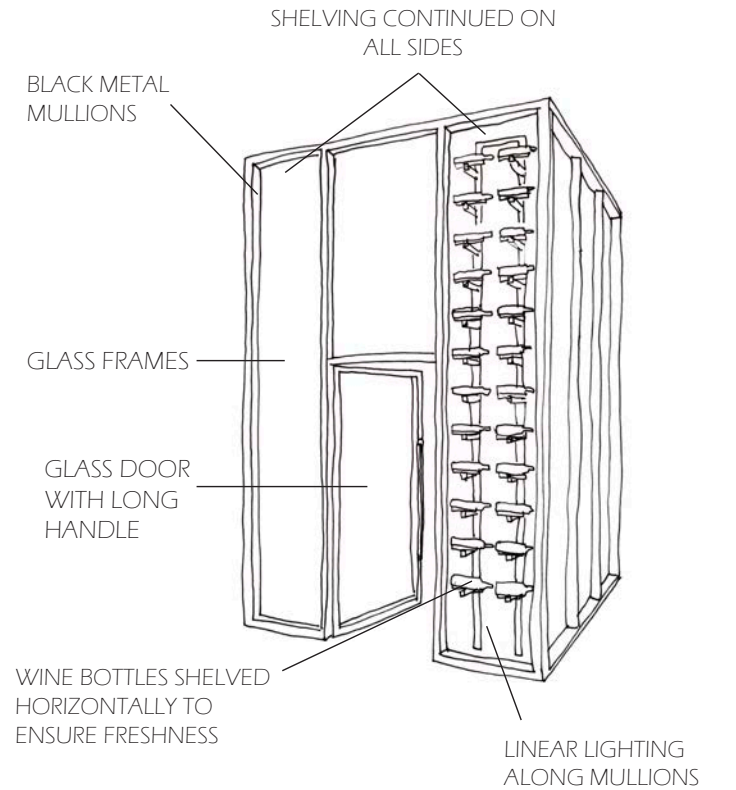
FLOS USA CAPTAIN FLINT OUTDOOR WALL SCONCE
FINISH: BRASS
TEMPERATURE: 2700K



BOOTH BACK LIGHTING
DIOLEDED BLAZE TAPE LIGHT
24VDC 2700K



WINE CLOSET



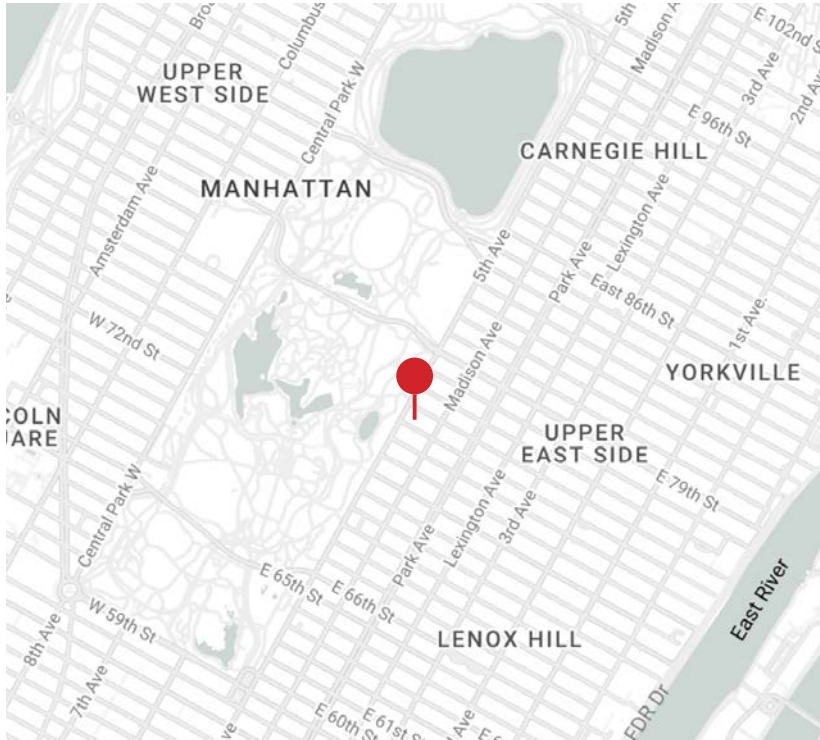


NYC Consular Residence of Pakistan

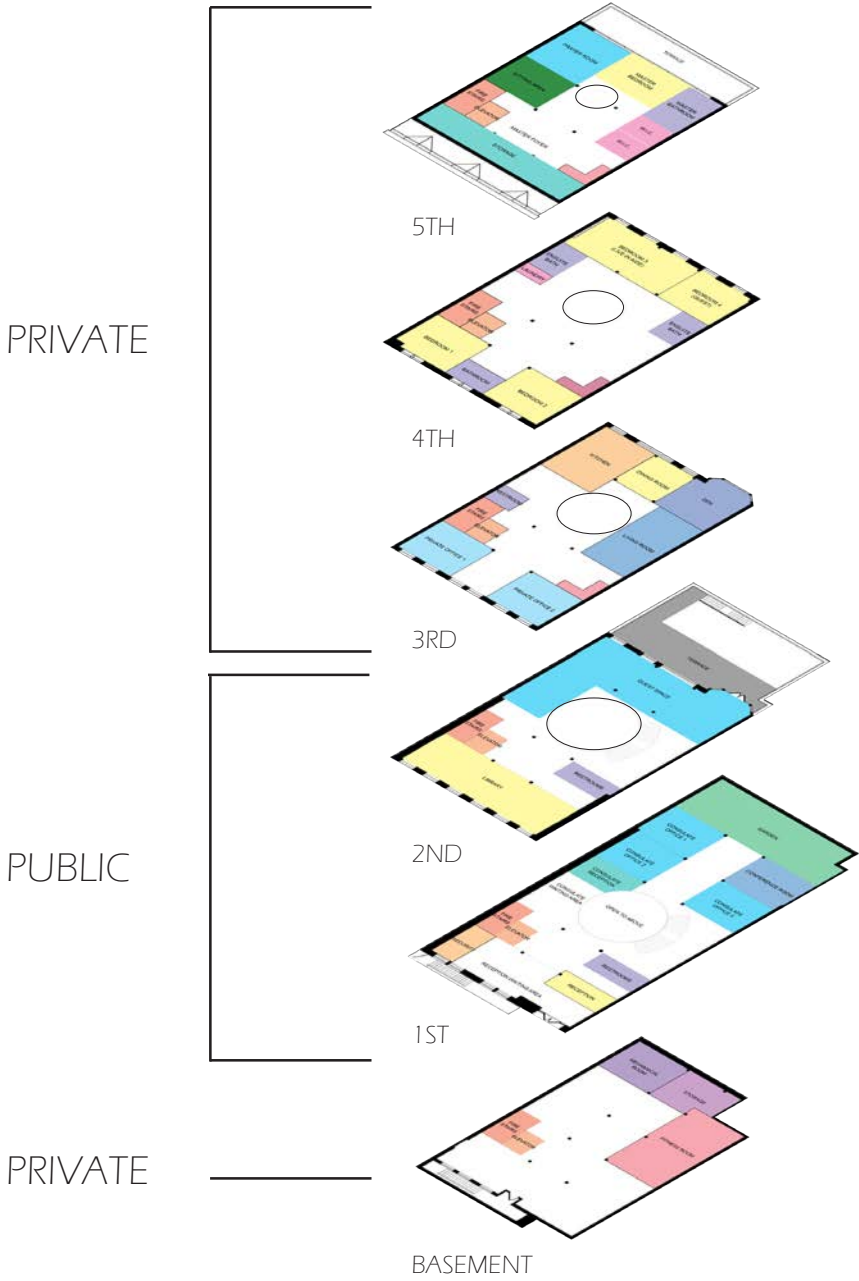
Fall 2022

Client:
 Consulate general of Pakistan, spouse,
 two children, live-in aide

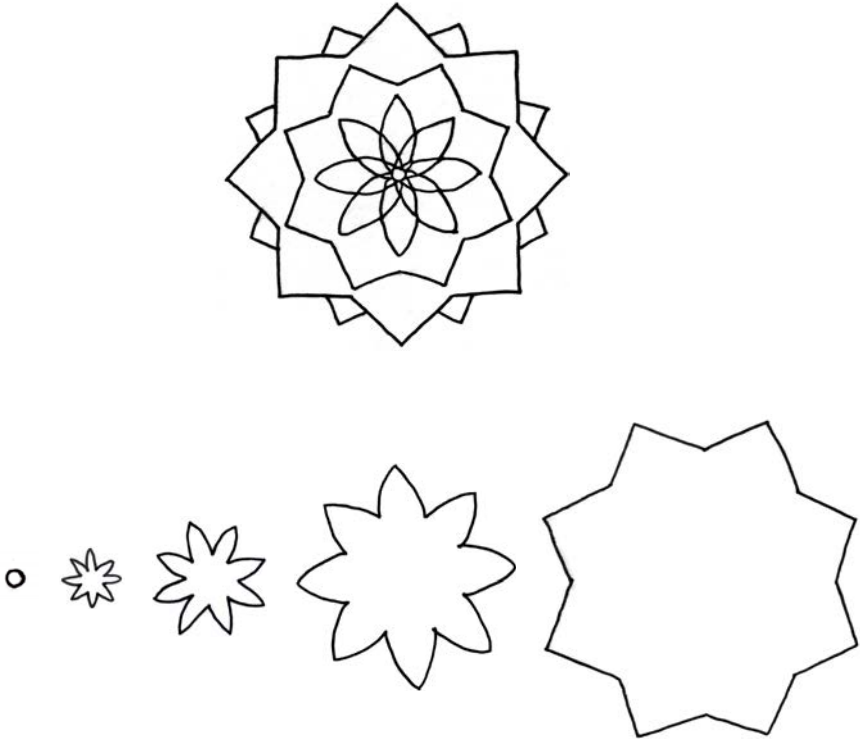
Building Description:
 Floors 1-2: Public consulate
 Floors 3-5: Private residence



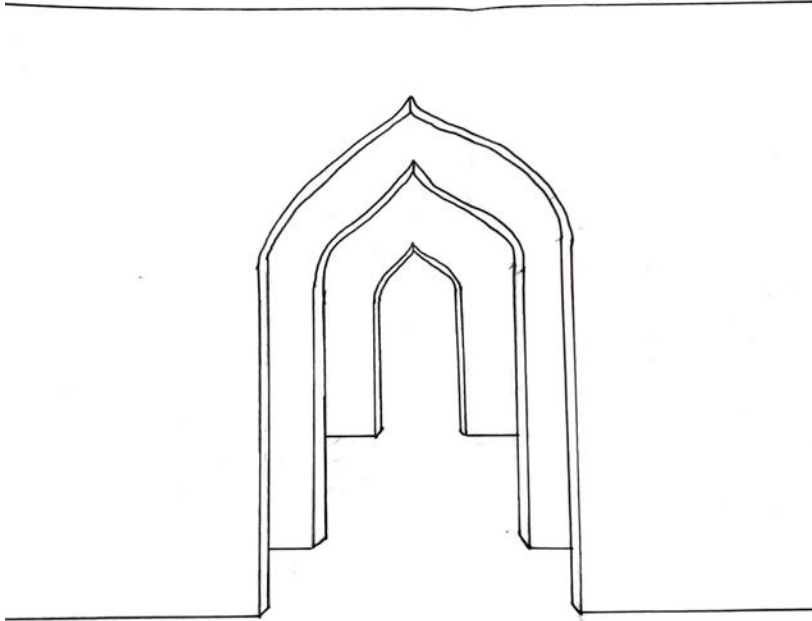
Location:
 4 East 75th Street, New York, NY 10021



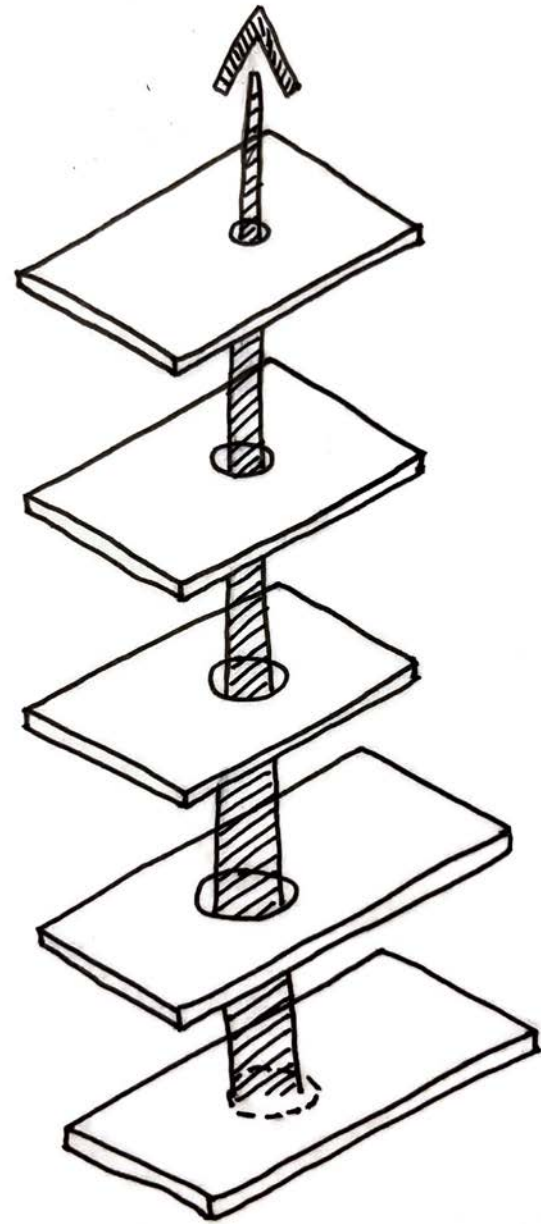
CONCEPT DRIVEN



Rosette patterns are often present in Islamic art & design. A pattern such as this one forms from the center and grows outward as the shapes repeat, seemingly infinitely.



Arches are also prominent in Islamic architecture and when viewed from one end, give the illusion of a rosette pattern growing outwardly.



Circle cut through each floor slab, getting smaller on each level.

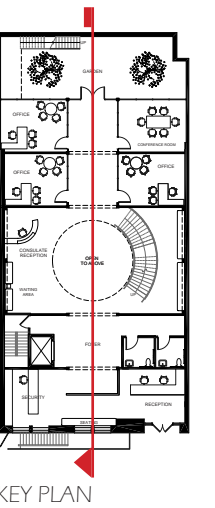


VIEW LOOKING UP CENTER OF BUILDING ON GROUND FLOOR

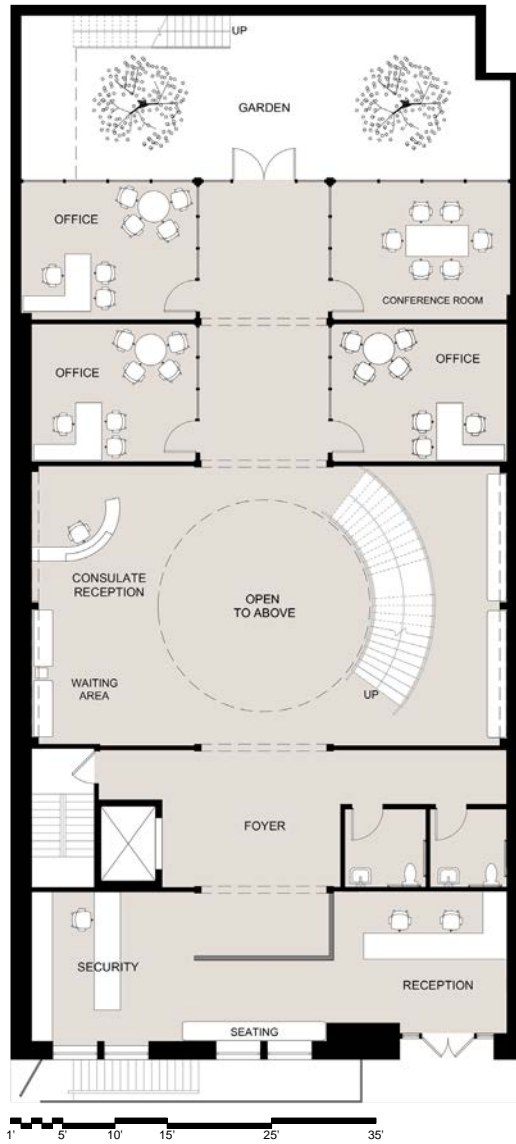
Seeking to create this illusion architecturally, the user can stand in the center of the first floor of the consulate and look up to admire the building's own rosette.



SECTION



KEY PLAN



FIRST FLOOR PLAN - CONSULATE



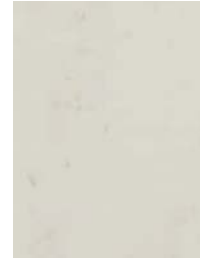
CONSULATE RECEPTION - ARCH VIEW



CONSULATE RECEPTION - STAIRCASE VIEW



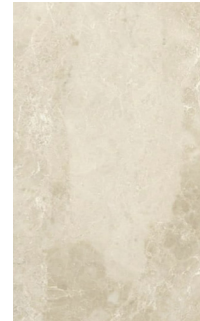
ARCHITECTURAL DETAILS



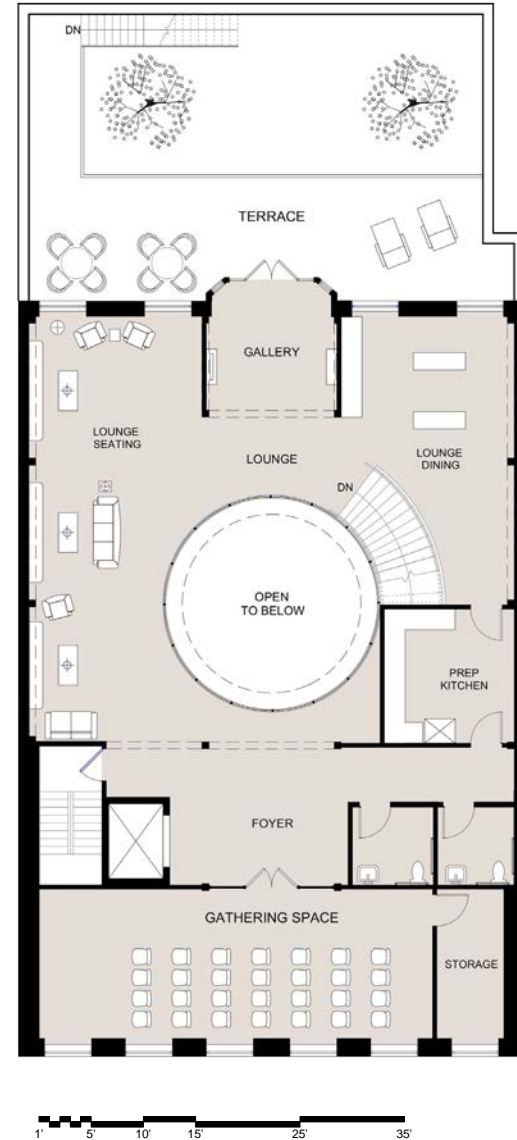
WALL TILE



FLOOR MOSAIC



STONE FLOORING



SECOND FLOOR PLAN - LOUNGE



LOUNGE & ART GALLERY



LOUNGE



PERFORATED WALL II:
ROSETTA STONE
Copper
60 1/2in x 30in x 3.5in



UPHOLSTERY



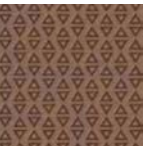
CURTAINS



UPHOLSTERY



WALL TILE



WALL TILE



MARBLE



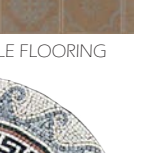
WALL TILE



TILE FLOORING



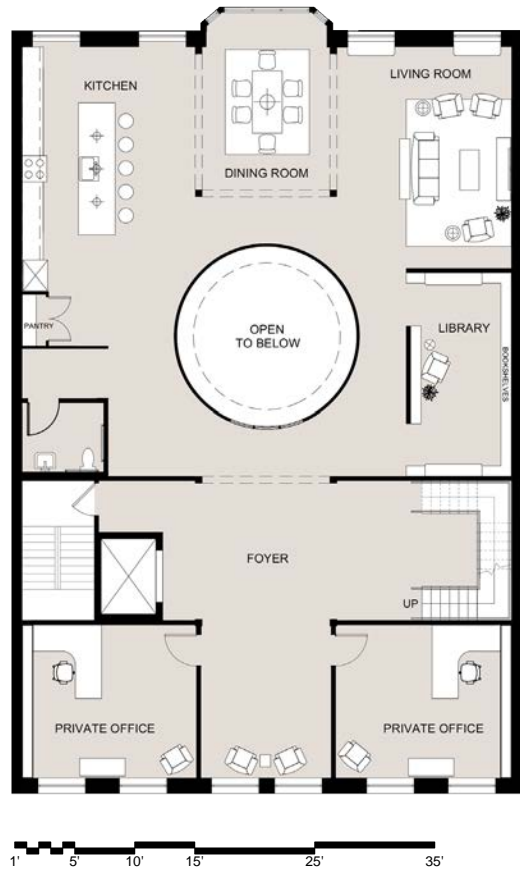
WALL TILE



MOSAIC



AREA RUG



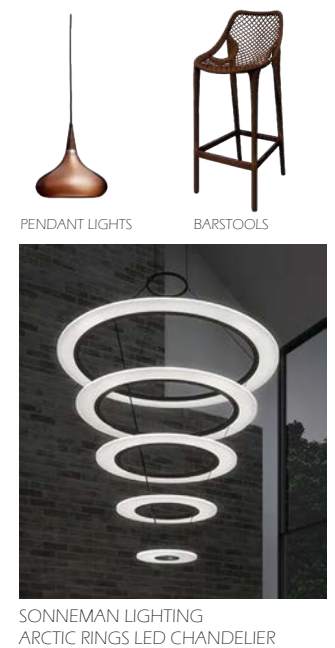
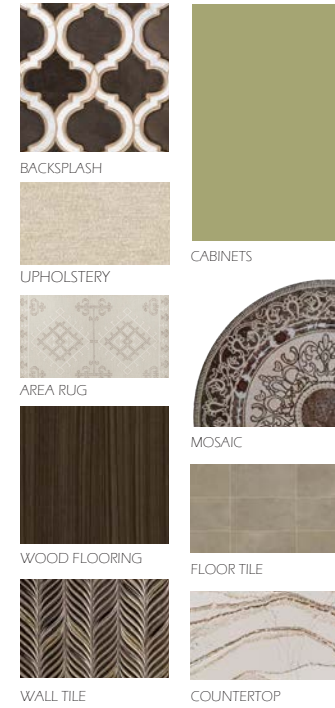
THIRD FLOOR PLAN - RESIDENTIAL



RESIDENTIAL KITCHEN



RESIDENTIAL DINING ROOM

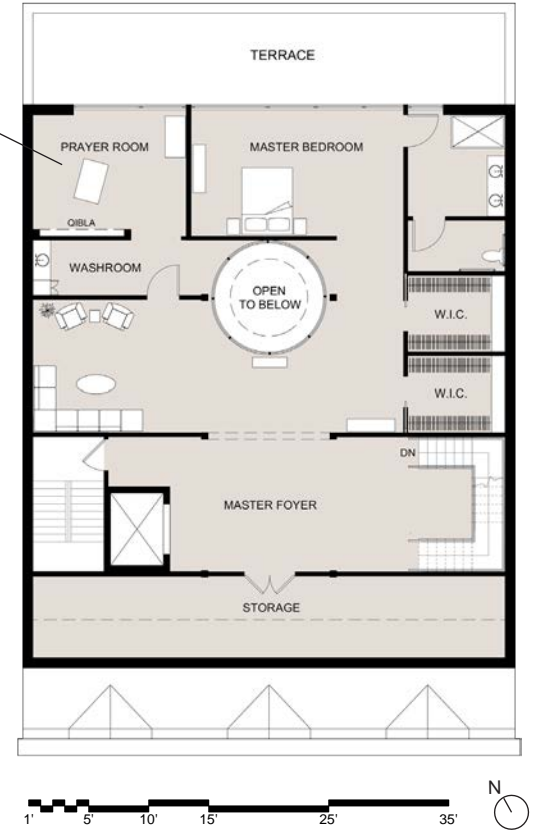


FOURTH FLOOR PLAN - RESIDENTIAL



DIRECTION OF MECCA ON MAP

The direction of Mecca, *Qibla*, was considered when designing the prayer room.



FIFTH FLOOR PLAN - RESIDENTIAL



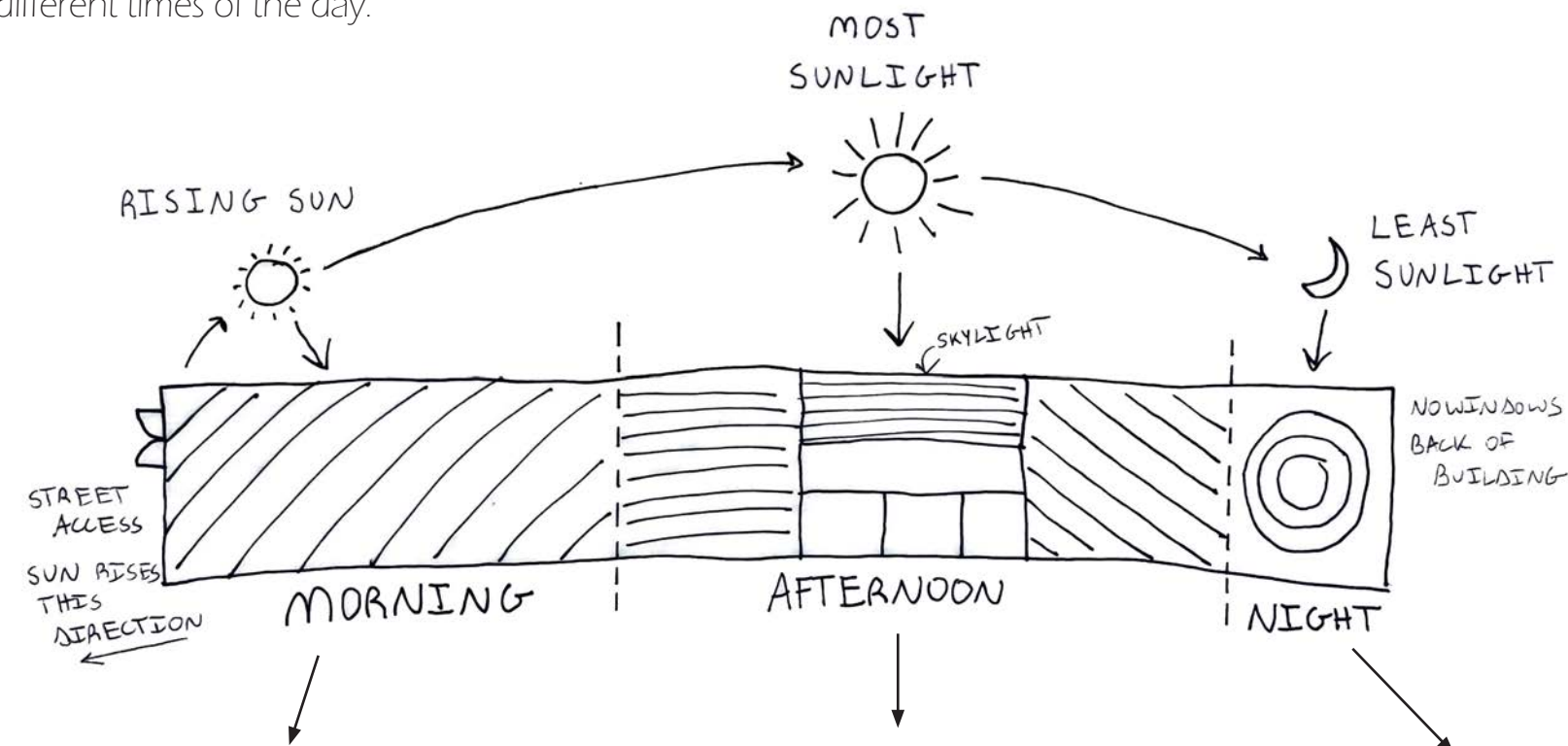
"ORE" Coworking Space
Spring 2023



Project completed during study abroad semester at Florence University of the Arts in Florence, Italy.



“Ore,” an Italian word translating to “time” or “hour”, is a coworking space that recognizes that we all work our best at different times of the day.



CAFE



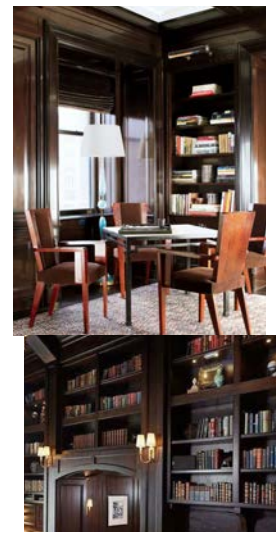
Morning is synonymous with coffee
Rising sunlight
Light, warm, airy colors + hues of green and nature imagery

GROUP STUDY

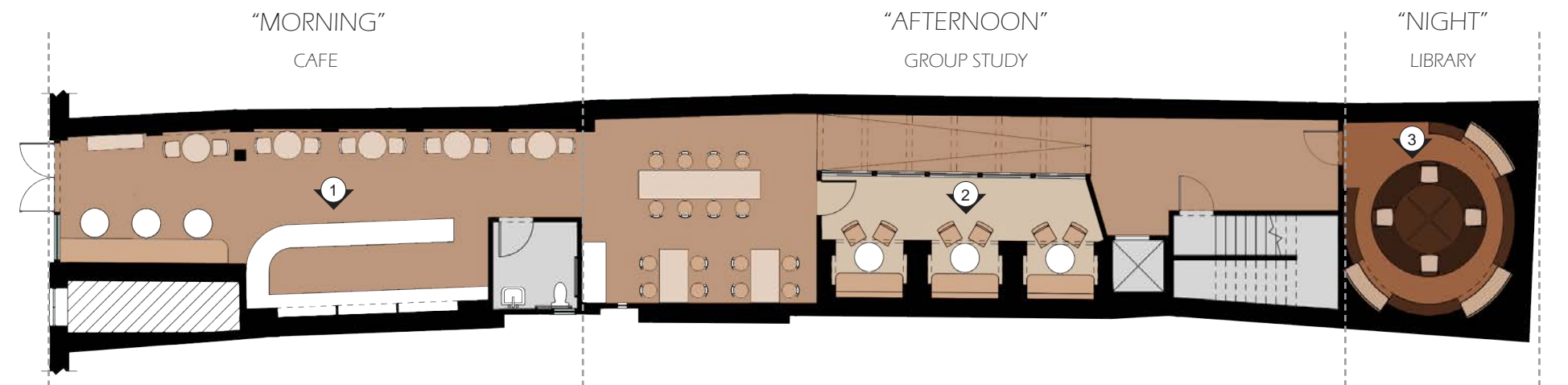


Most energy and socialization in the afternoon
Skylight lets in the peak daylight
Light neutral colors + arch features

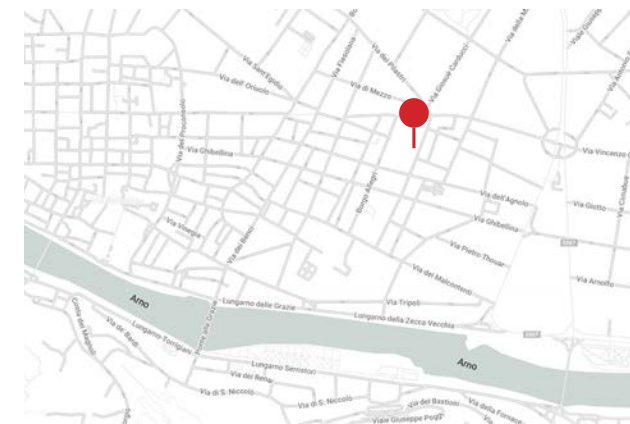
LIBRARY



Quiet and private like the night
No windows, small space
Dark wood and colors to imitate night



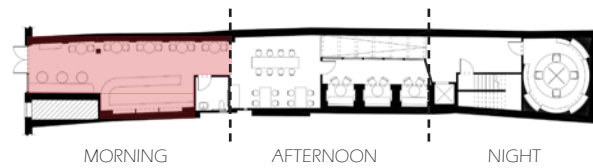
FIRST FLOOR PLAN



Location:
Via dei Macci, 85R, 50122
Florence, Italy



"MORNING" - CAFE

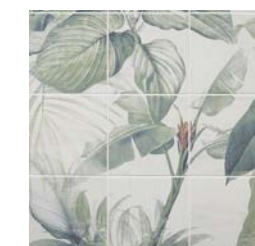
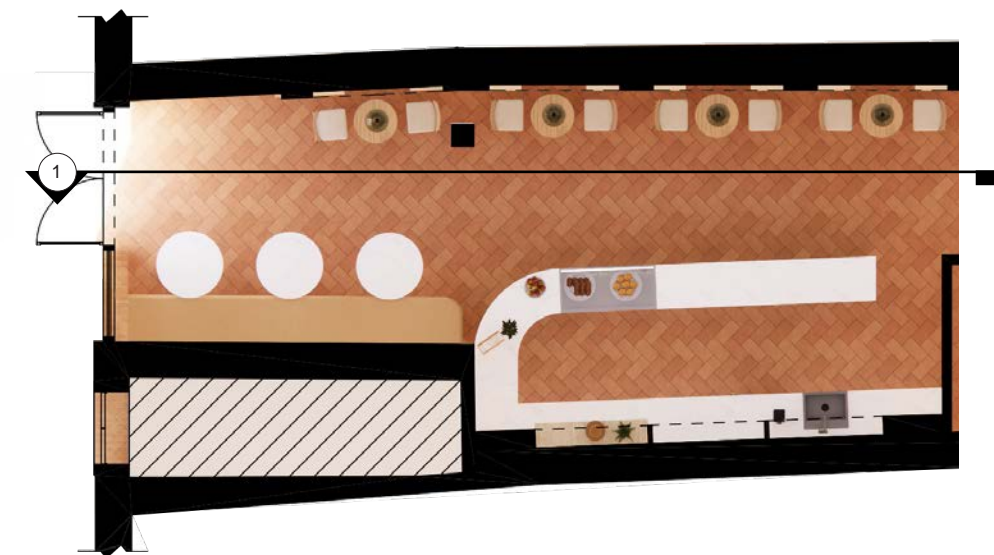


TERRA COTTA TILES WALLCOVERING WALL PAINT

1 CAFE SECTION



MARBLE COUNTERTOP BAR TILES TABLE AND CHAIR WOOD

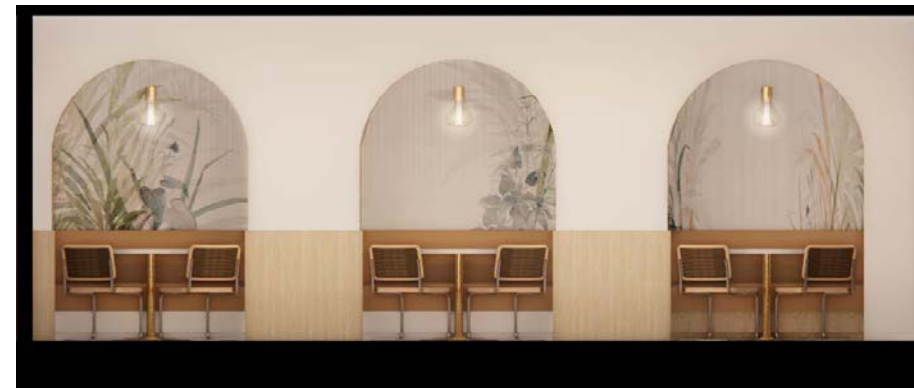
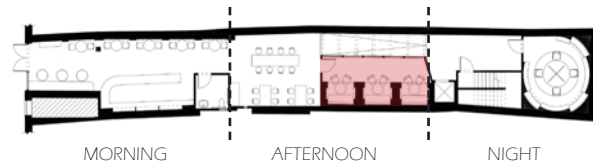


BACKSPLASH TILE

CAFE FLOOR PLAN



"AFTERNOON" - GROUP STUDY ROOM



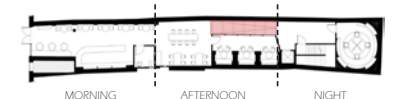
2 GROUP STUDY AREA SECTION



GROUP STUDY AREA FLOOR PLAN

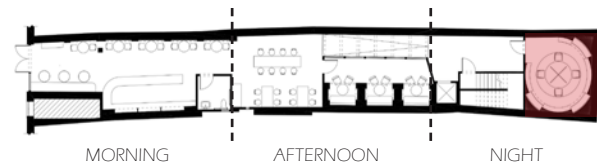


"AFTERNOON" - HALLWAY

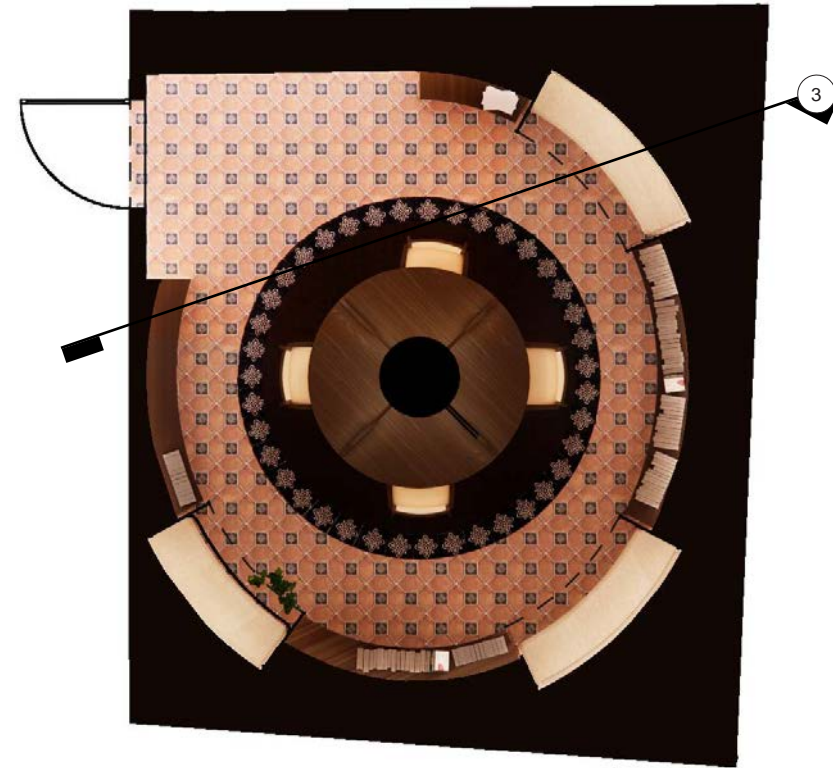




"NIGHT" - LIBRARY



3 LIBRARY SECTION



LIBRARY FLOOR PLAN



BOOKSHELVES

FLOOR TILES

UPHOLSTERY



CARPET

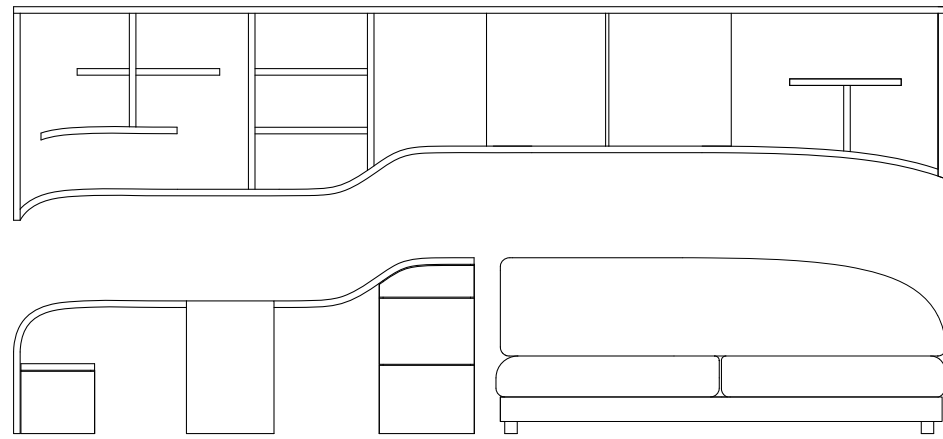
ALPI WALLCOVERING



“Rompicapo” Furniture Collection
Spring 2023



Project completed during study abroad semester at Florence University of the Arts in Florence, Italy.

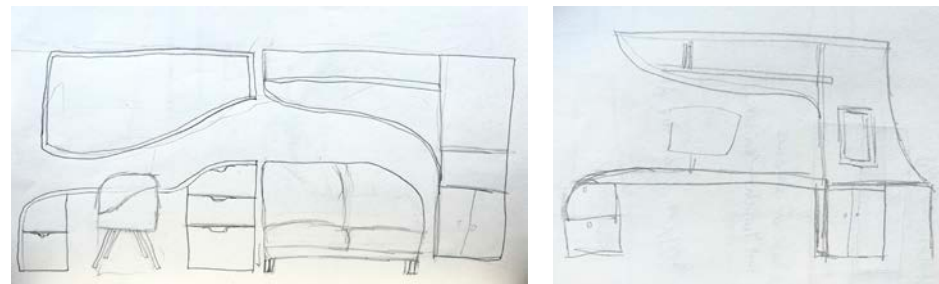


“Rompicapo” - Italian translation for “puzzle.”

Drawing inspiration from a **jigsaw puzzle**, the pieces in this collection are meant to **piece together** along a single wall.

Curvilinear lines are juxtaposed with a **geometric** MDF wood finish from Italian company, ALPI, to pose a modern feel.

This configuration is especially useful in residential applications where space is limited as the collection includes work-space, socializing and relaxing space, and storage.



PROCESS SKETCHES



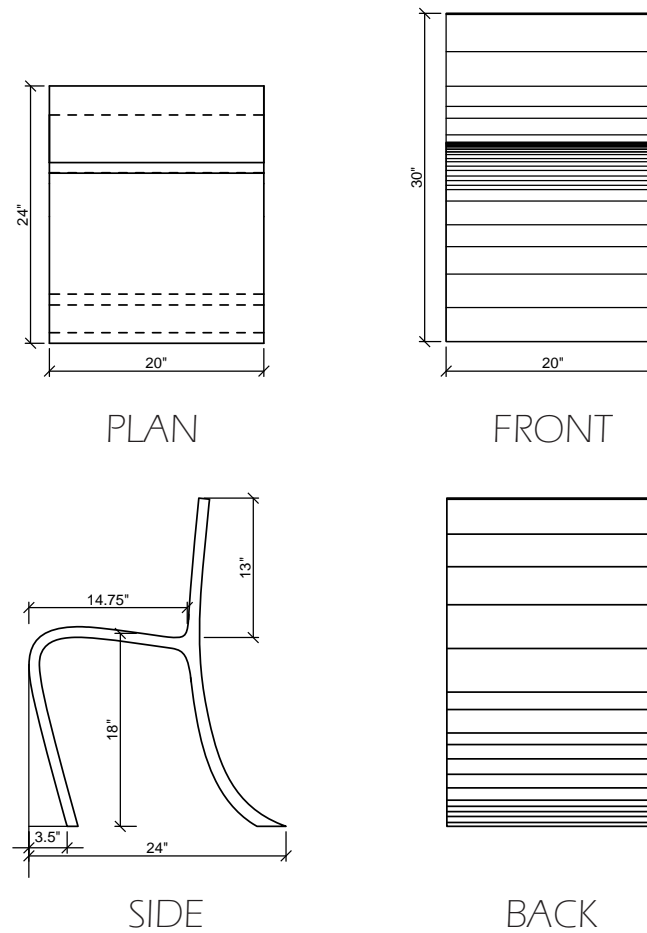
WHITE LACQUER FINISH



CURVED MDF WOOD

MATERIAL INSPIRATION

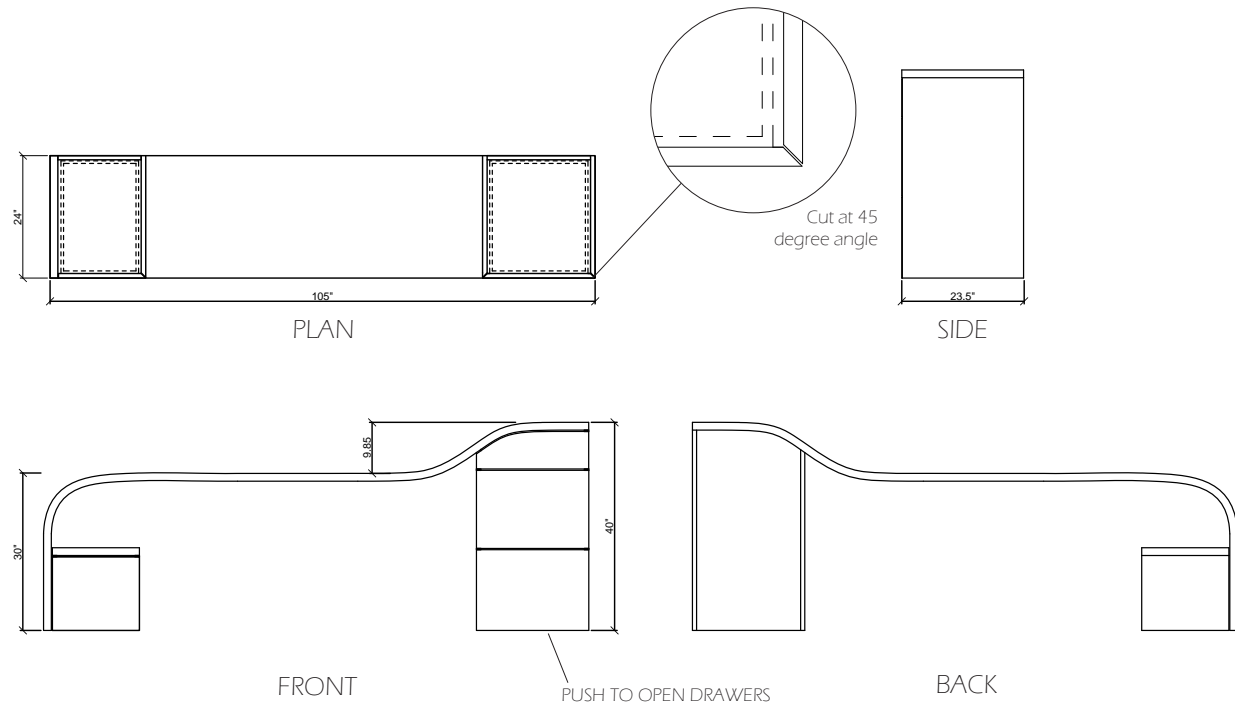
CHAIR



OVERALL DIMENSIONS: 20in x 24in x 30in



DESK



OVERALL DIMENSIONS: 105in x 24in x 30-40in



ALPI GAMPERANA
TRIPLEX



ALPI ALPS
DARK OAK



WHITE LACQUER

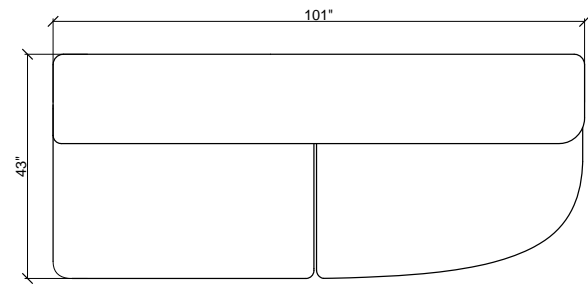


ALTERNATIVE FINISH OPTION - ALL WHITE LACQUER

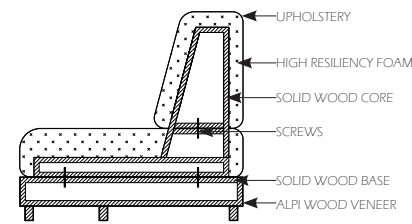


WHITE LACQUER

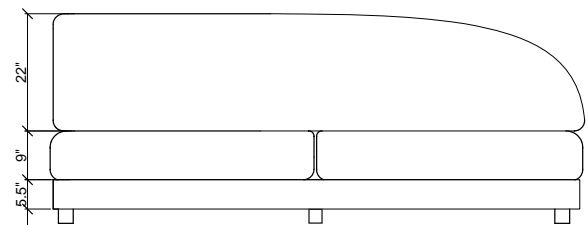
SOFA



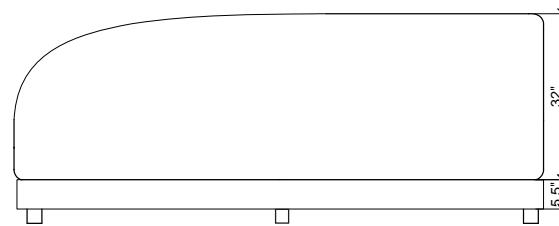
PLAN



SIDE



FRONT



BACK

OVERALL DIMENSIONS: 101in x 43in x 40in

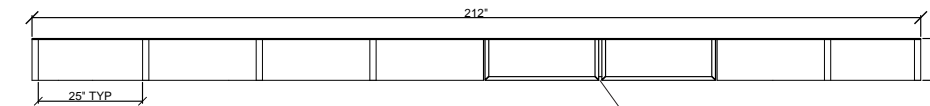


UPHOLSTERY

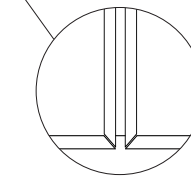


ALPI GAMPERANA TRIPLEX

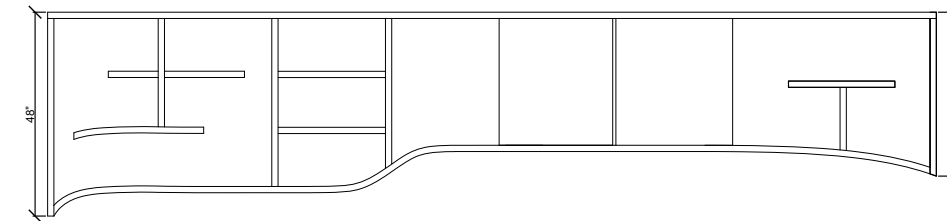
BOOKSHELVES



PLAN



Cabinets cut at 45 degree angle



FRONT

OVERALL DIMENSIONS: 212in x 10in x 40-48in



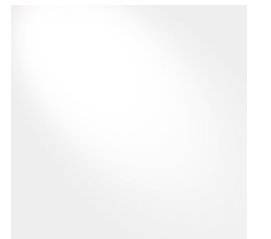
ALPI GAMPERANA TRIPLEX



ALPI ALPS DARK OAK



ALPI VIENNA OAK FLAMED



WHITE LACOUER





THANK YOU